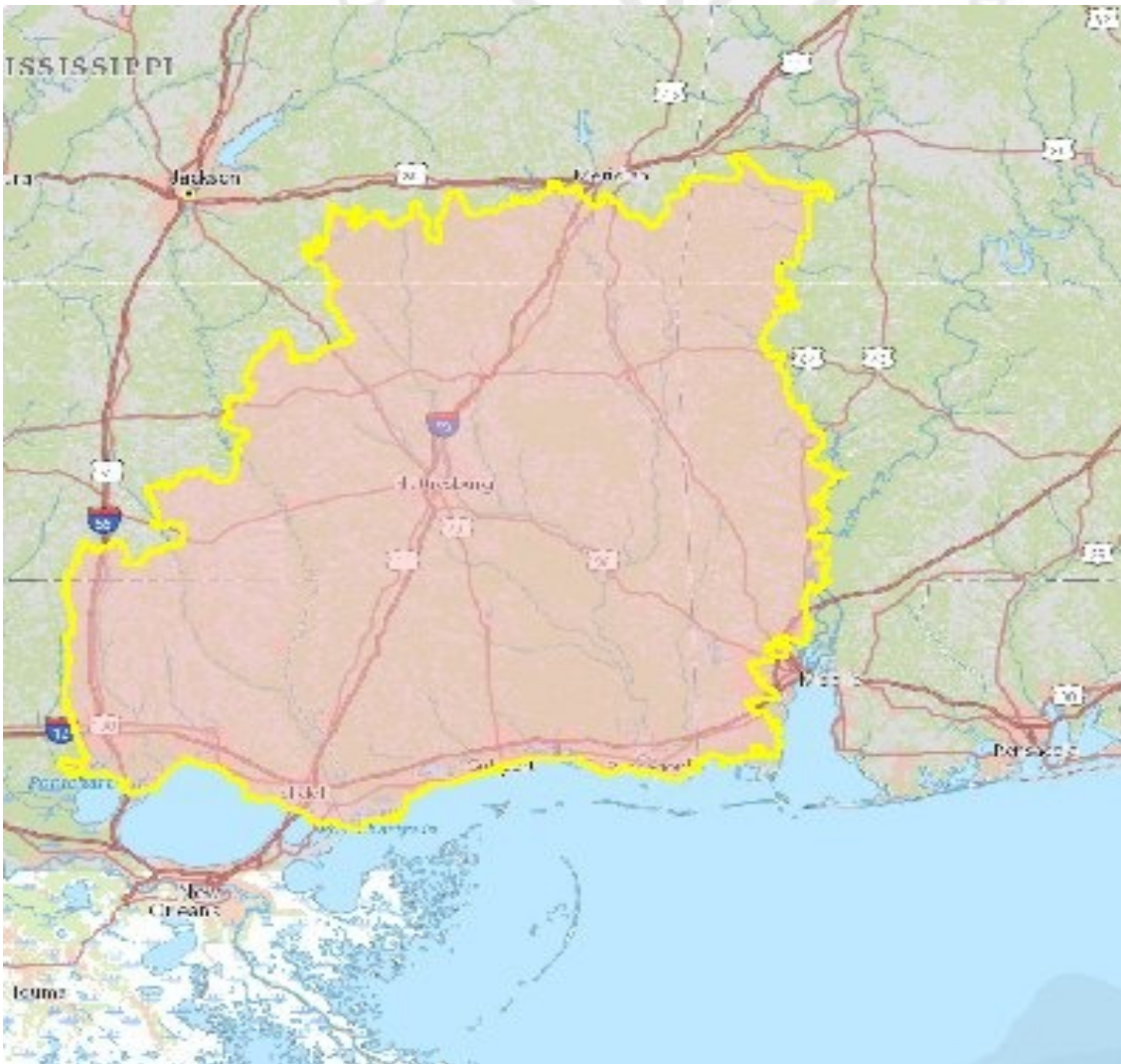


Endangered Species Protection Bulletin



Valid For: September 2018

- 1 Areas where pesticide use must be limited are identified on the map. A legend is located below the map to help pinpoint these locations.



 Limitation Area

- 2 Look below at the Pesticide Use Limitation Summary Table. This table lists the user selected Active Ingredient(s) (AIs) or Product(s) with pesticide use limitations on the printed map. Locate the Active Ingredient (AI) or Product you intend to apply in this table and identify the code in the last column. This code indicates the specific limitation associated with that AI or Product. A limitation description for each code can be found below in the Codes and Limitations Table. If multiple Pesticide Use Limitation Areas (PULAs) are visible on the map, these tables provide information for the highlighted PULA.

If you are applying a pesticide that contains more than one Active Ingredient, or multiple Products, then multiple codes may apply. Follow the limitations for all codes when using this pesticide.

Pesticide Use Limitation Summary Table

AI/Product	Use	App Method	Formulation	Code
Potassium nitrate	Any Use	Animal burrow treatment	Gas cartridge	C1
Charcoal (carbon)	Any Use	Animal burrow treatment	Gas cartridge	C1
AMDRO GOPHER GASSER [73342-8]	Any Use	Animal burrow treatment	Gas cartridge	C1
THE GIANT DESTROYER [10551-1]	Any Use	Animal burrow treatment	Gas cartridge	C1
Charcoal (carbon)	Any Use	Animal burrow treatment	Gas cartridge	C2
REVENGE RODENT SMOKE BOMB [9086-4]	Any Use	Animal burrow treatment	Gas cartridge	C1
SMOKE 'EM [4-463]	Any Use	Animal burrow treatment	Gas cartridge	C1
Sulfur	Any Use	Animal burrow treatment	Gas cartridge	C1
LARGE GAS CARTRIDGE [56228-62]	Any Use	Animal burrow treatment	Gas cartridge	C1
SMOKE CARTRIDGE [36488-67]	Any Use	Animal burrow treatment	Gas cartridge	C1
APHIS-ONLY GAS CARTRIDGE [56228-2]	Any Use	Animal burrow treatment	Gas cartridge	C2
Sodium nitrate	Any Use	Animal burrow treatment	Gas cartridge	C2
APHIS-ONLY LARGE GAS CARTRIDGE [56228-21]	Any Use	Animal burrow treatment	Gas cartridge	C2
Sodium nitrate	Any Use	Animal burrow treatment	Gas cartridge	C1
GAS CARTRIDGE [56228-61]	Any Use	Animal burrow treatment	Gas cartridge	C1

Codes and Limitations Table

Code	Limitation
C1	Use of gas cartridges (containing some or all of the following active ingredients: carbon dioxide, carbon, sodium nitrate, potassium nitrate and sulfur) is prohibited in this area
C2	Use of the gas cartridge products by USDA/APHIS personnel is prohibited in this area, unless USDA/APHIS has consulted with the U.S. Fish and Wildlife Service (U.S. FWS) on the use of these products within the specified area and follows all U.S. FWS specifications for use.